

'08:30 –09:00

# Implementing a data- centric mind set through a data centric architecture @E.ON

**Business** is our focus



*We work closely together to help you overcome your challenges*



*We are one team, with the same goal: we want to enable the energy transition*

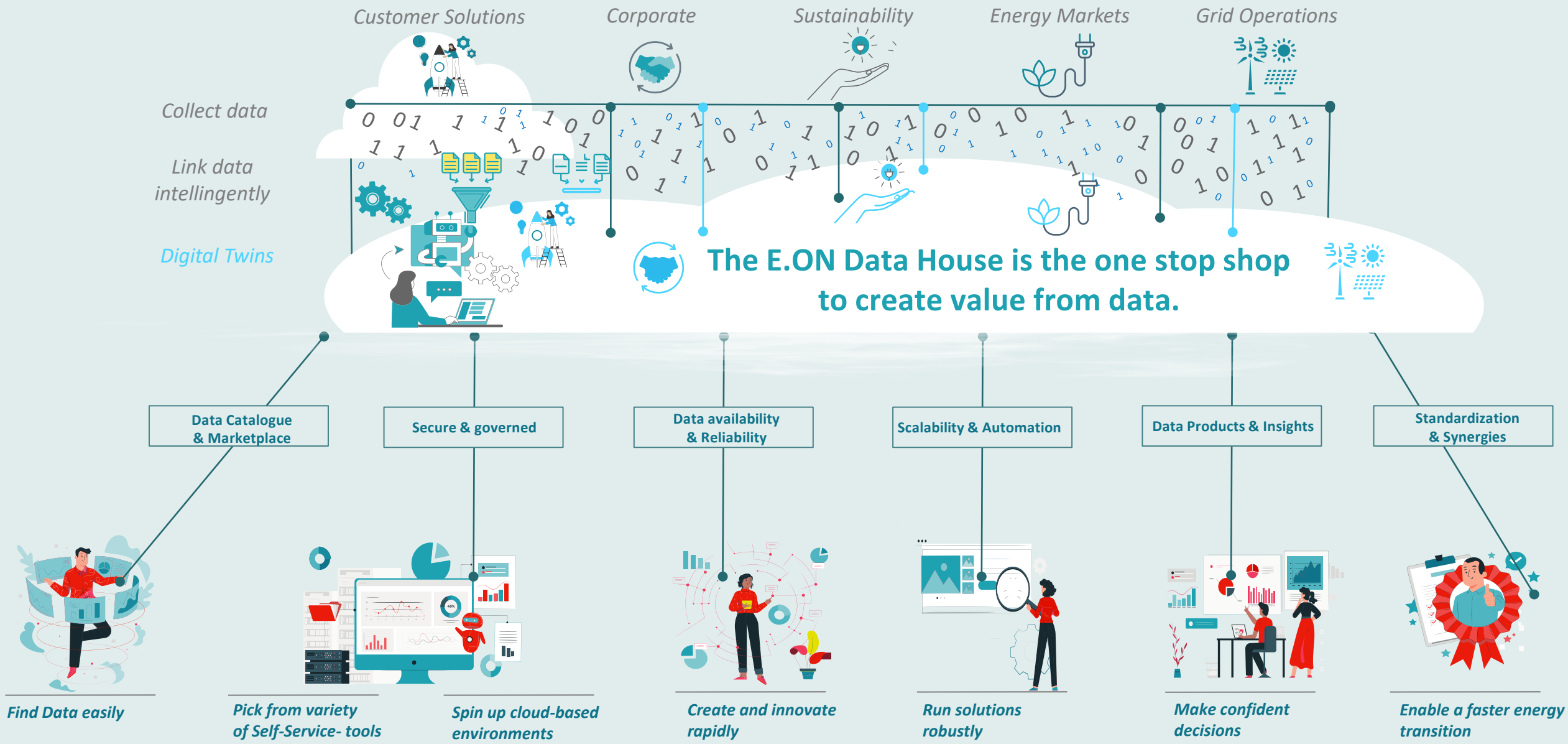


*With the right guidance and steering we set the right frame for you to focus on your business outcome*



**The E.ON Data House is your backbone to create more value in your business.**

# The Mission of Data @ E.ON is to enable a faster energy transition



# **Data Governance** is a key driver for ensuring **Efficiency, Governance and Compliance**



To support the **digital transition** of this complex ecosystem you need to address both:



## Organizational transformation

We aim to develop innovative approaches for data management that do allow the strong **collaboration** between the **Business Units** and **global team**. This will involve dismantling information barriers and forming **interdisciplinary teams** focused on creating **flexible solutions** on a larger **scale**.

## Technological transformation

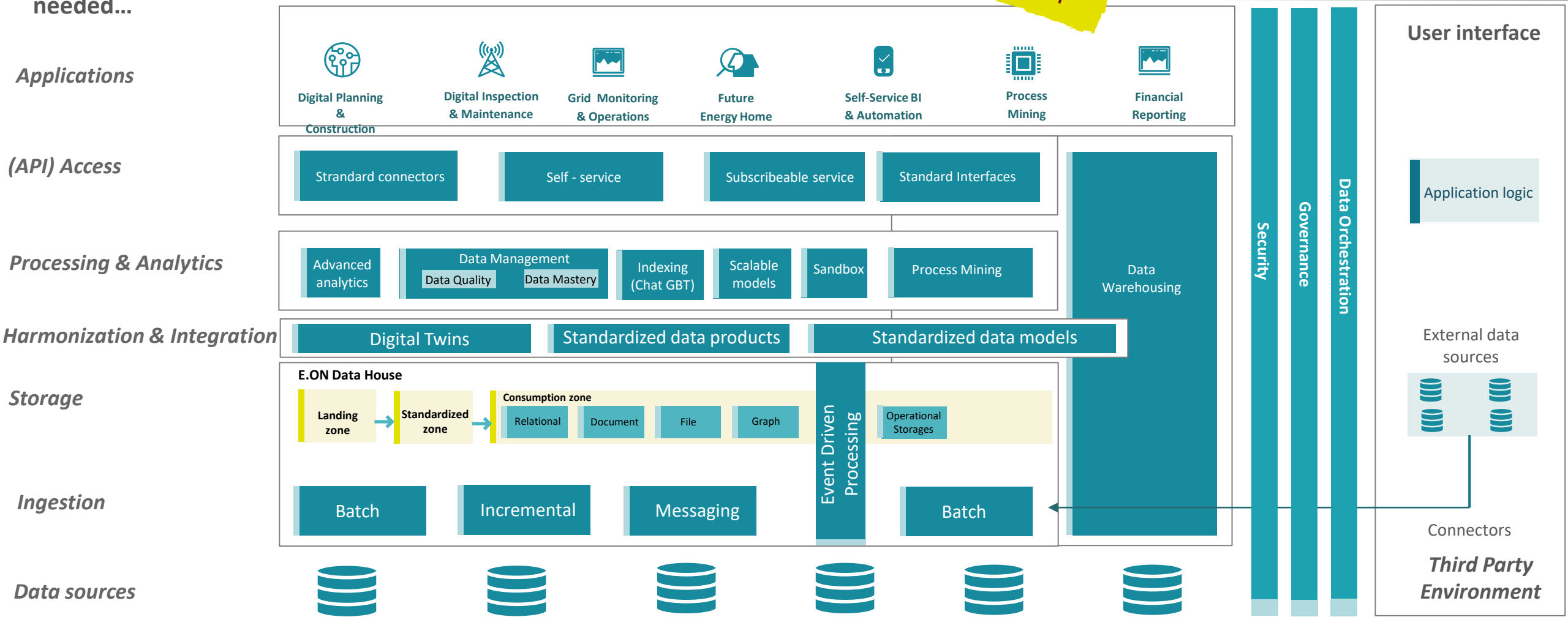
We plan to shift our focus **from a application-centric architecture to a platform-based data-centric strategy**, allowing for adaptable, component-based, and expandable implementation of use cases. Our goal is to provide a **unified and efficient solution** for deriving **value from data**.

# E.ON's technology stack allows decoupling the data from the applications and offers all services to leverage the full value of data

Target components of the Data Techstack are deployed as needed...

... and off-the shelf platforms enable the data centric architecture

**DRAFT**



*Applications*

*(API) Access*

*Processing & Analytics*

*Harmonization & Integration*

*Storage*

*Ingestion*

*Data sources*

User interface

Application logic

External data sources

Connectors  
Third Party Environment

Security

Governance

Data Orchestration

Data Warehousing

Event Driven Processing

E.ON Data House

Landing zone

Standardized zone

Consumption zone

Relational

Document

File

Graph

Operational Storages

Batch

Incremental

Messaging

Batch

Digital Planning & Construction

Digital Inspection & Maintenance

Grid Monitoring & Operations

Future Energy Home

Self-Service BI & Automation

Process Mining

Financial Reporting

Standard connectors

Self - service

Subscribeable service

Standard Interfaces

Advanced analytics

Data Management

Data Quality

Data Mastery

Indexing (Chat GBT)

Scalable models

Sandbox

Process Mining

Digital Twins

Standardized data products

Standardized data models

Landing zone

Standardized zone

Consumption zone

Relational

Document

File

Graph

Operational Storages

Batch

Incremental

Messaging

Batch



Connectors

Third Party Environment

# Developing foundations in an agile setup guided by best practice and use cases in order to create immediate impact and capture value early

You can develop foundations in an agile setup that are guided by use cases and focused on creating immediate impact and capturing value early



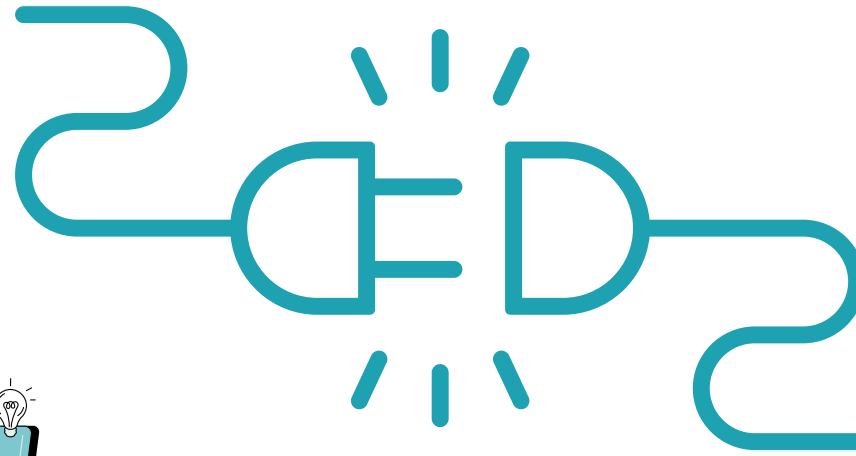
Customer Analytics



IConnect – for green energy transition



Grid Balancing



Marketing



Innovation

This approach will allow you to quickly validate your assumptions, test your ideas, helping you to deliver value to your users faster and more effectively.

# Expert Communities are catalysts for innovation and transformation



Community

---

Objective

(Meeting)  
Formats

Data Governance Circle

---

Our regional Data Governance Leads come together to drive data ownership implementation & use case developments

Monthly Data Roundtable with Data Governance and Data Family KES  
P2P Exchange  
Local Data Governance Weeks

Data Tech

---

Brings together the technical data heroes and have them derive standards and principles in the working with data

Monthly sessions  
Monthly technical drop-in  
Bi-weekly Q&A drop-in



Data Family community for anyone interested in data

---

Stay up to date on Data Family developments, share them with others, **participate in community events.**

Newsletter:  
Internal DARE  
EDH  
**Data@E.ON**



# What we discovered when making our effort in the highly regulated energy industry

E.ON Data House is being used for creating a fundament for efficient data management

---

After things fell into place, we enlarged our focus topics which allowed us to grow exponentially

---

Having an Expert Community is a catalyst for innovation

---

The Community is taking on a new dimension every day

---

We encourage cross-country expertise sharing.

---



## SESSION FEEDBACK

Session Title: Transformation zu einer datenzentrierten Organisation – E.ON Data House



<https://aka.ms/AzSum-S002>

**THANK YOU!**